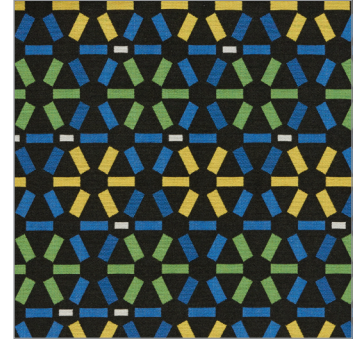


# Cleaning Guide

Pattern:	<b>Atomic</b>
AC#:	<b>61820 - 61833</b>
Content:	<b>82% Polyester, 18% Nylon</b>
Bleach Cleanable:	<b>May be cleaned with bleach following the proper ratio of 90% water : 10% bleach.</b>
Finish:	<b>Crypton</b>
Cleaning Code:	<b>WS</b>



## General Cleaning Recommendation:

### Spot Cleaning

The spot cleaning method of stain removal can be used for most light to medium stains.

1. Before spot cleaning, blot up liquids on the surface with a clean, soft towel and brush off any loose dirt.
2. Prepare a cleaning solution of 1/4 tsp mild, enzyme detergent, such as Tide®, Woolite® or Dawn® dishwashing liquid, per 1 cup of lukewarm water.
3. Apply the cleaning solution to the affected area using a spray bottle.
4. Work the solution into the affected area by lightly scrubbing the area with a sponge or soft bristle brush. Make sure to work from the outside of the stain inward so as not to spread the stain and rinse your sponge or brush frequently.
5. Allow cleaning solution to soak into the fabric.
6. Rinse thoroughly to remove all soap residues, as residues will attract dirt. Blot excess moisture with a clean, soft towel or sponge.
7. Repeat steps 3-6 as needed.
8. Allow fabric to air dry.

### Extraction Cleaning

The extraction cleaning method of stain removal can be used for most medium or ground-in stains and for overall maintenance.

1. Prepare the upholstery using the spot cleaning method above to pre-treat any spots. Vacuum the upholstery to remove any loose debris.
2. Prepare a cleaning solution by reading the instructions on the chosen extraction concentrate bottle to include the proper dilution ratio. Pour the solution into the tank.
3. Apply solution to fabric by spraying with upholstery wand sprayer.
4. Vacuum up the solution with the upholstery wand vacuum nozzle.
5. Allow fabric to air dry.
6. If any stains remain, repeat the process. (Some stains are more difficult to remove than others.)

## **Disinfectable Fabric**

- Crypton Fabric is the world's first and only disinfectable fabric when used in conjunction with their U.S. EPA-registered Crypton Disinfectant & Deodorizer.
- Crypton Disinfectant & Deodorizer kills common household, kitchen, and bathroom germs and viruses on non-porous surfaces, including: E. Coli, H1N1, hepatitis B and C, herpes simplex 1 and 2, HIV, influenza, staphylococcus, streptococcus, salmonella, MRSA, VRE, canine distemper, mold, mildew, and many more.
- Crypton Disinfectant & Deodorizer is a registered, hospital-like quaternary disinfectant, perfect for use in hospitals, nursing homes, extended care facilities, schools, hotels, and restaurants.

## **Bleach Cleaning**

1. Before bleach-cleaning, make sure fabric is dry and has been vacuumed, and that the space is ventilated.
2. Prepare a 10% bleach solution in water.
3. Test the solution in an inconspicuous location first before applying over the rest of the fabric.
4. Apply the cleaning solution using a misting spray bottle.
5. Work the solution into the affected area by lightly scrubbing the area with a sponge or soft bristle brush. Make sure to work from the outside of the stain inward so as not to spread the stain and rinse your sponge or brush frequently.
6. Allow cleaning solution to linger for the time specified by the Centers for Disease Control and Prevention.
7. Rinse thoroughly to remove all bleach residues from the fabric.
8. Allow fabric to air dry.

*The cleaning recommendations above are a guide to help in the maintenance of Arc-Com textiles. They are supplied without warranty, representation or inducement of any kind, including, but not limited to, the implied warranties of merchantability and fitness for a particular use or purpose. Arc-Com neither guarantees, nor will take any responsibility for, specific results as testing of these products was conducted under laboratory conditions and results may vary under actual conditions. Any misuse of cleansing agents may void the Arc-Com UPHOLSTERY WARRANTY & PERFORMANCE GUARANTEE.*

*Under no circumstances shall Arc-Com be liable for any incidental, consequential, or other damage resulting from negligence, misuse, mishandling or exposure to any of the chemicals used in connection with the cleaning or maintenance of Arc-Com textiles. Information or questions relating to chemicals or cleaning solvents, environmental use, and human exposure should be reviewed with the appropriate vendors or suppliers. Users must read the product specifications and determine appropriateness for specific applications. All label instructions on their use and precautions should be followed.*