



Arc|Com  
Alliance®  
Series II

SitOnIt • Seating®



technical information

Pattern	Width	Content	Finish	Approx. Repeat	Abrasion Resistance (Double Rubs)	Cal 133	Cleaning Code	Grade
Axis®	54"	100% Vinyl Face 100% Polyester Back	MoreCare™ Stain Resistant Finish	N/A	300,000	133	WS/BC	7
Dynasty	54"	100% Polyurethane Face 100% Polyester Back eco-tex	WipeOut® Stain Protection, Aegis Microbe Shield®, Abrasion Resistant, Mildew Resistant	N/A	300,000	133	WS/BC	6
Geostitch®	54"	100% Post Industrial Recycled Solution Dyed Nylon eco-tex	Stain Resistant Finish Acrylic Backing	7" H. x 5 ¾" V.	150,000	133	WS/BC	7
Gianni®	54"	49% Cotton, 30% Post Industrial Recycled Solution Dyed Nylon, 13% Rayon, 8% Post Industrial Recycled Polyester eco-tex	Stain Resistant Finish Acrylic Backing	13 ¾" H. x 13 ¾" V.	110,000	133	WS	7
Great Wall®	54"	74% Post Consumer Recycled Polyester, 26% Nylon eco-tex	NANotex™ Stain Resistant Finish Acrylic Backing	9 ½" H. x 9 ½" V.	150,000	133	WS/BC	6
Intaglio 2	54"	100% Polyurethane Face 100% Polyester Knit Back eco-tex	WipeOut® Stain Protection, Aegis Microbe Shield®, Abrasion Resistant, Mildew Resistant	N/A	500,000	133	WS/BC	6
Isabella®	54"	100% Vinyl Face 100% Polyester Knit Back	RESILIENCE <sup>SR</sup> Enduring Protection Stain Resistant Finish	1 ¼" H. x 2 ½" V.	300,000	133	WS/BC	5
Katano®	54"	100% Post Industrial Recycled Solution Dyed Nylon eco-tex	Stain Resistant Finish, Acrylic Backing	4 ½" H. x 11 ½" V.	100,000	133	WS/BC	6
Moon Beam 2	54"	61% Polyester, 27% Cotton 11% Rayon, 1% Nylon	CRYPTON™ Stain Resistant Finish	N/A	150,000	133	WS	7
Palatine 2	54/55"	65% Polyester, 35% Rayon	CRYPTON™ Stain Resistant Finish	N/A	150,000	133	WS	6
Polished	54"	100% Polyurethane Face 100% Polyester Back	WipeOut® Stain Protection, Aegis Microbe Shield®, Abrasion Resistant, Mildew Resistant	N/A	300,000	133	WS/BC	6
Santa Fe	54"	57% Polyester, 25% Viscose, 18% Cotton	Stain Resistant Finish	N/A	100,000	133	S	6
Silverado 2	54"	100% Vinyl Face 100% Polyester Hi-Loft <sup>2™</sup> Back	AG SILVERGUARD™ Silver Ion Technology, PERMABLOK <sup>3™</sup> Stain Resistant Finish	N/A	390,000	133	WS/BC	5
Sundial®	54"	79% Post Consumer Recycled Polyester, 21% Nylon eco-tex	NANotex™ Stain Resistant Finish, Acrylic Backing	14 ¼" H. x 14 ½" V.	100,000	133	WS/BC	6
Velocity®	54"	100% Vinyl Face 100% Polyester Hi-Loft <sup>2™</sup> Back	AG SILVERGUARD™ Silver Ion Technology Stain Resistant Finish	18" H. x 20" V.	300,000	133	WS/BC	7






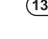
See Arc|Com Textile samples for specific technical data.

This card represents only a select sampling of the Arc|Com fabrics available.


For the complete selection of patterns and colorways and/or samples of our specific fabrics visit our website at [www.arc-com.com](http://www.arc-com.com) or contact Arc|Com at 800-223-5466.

AC numbers for Arc-Com reference only.

all ACT® icons apply to the above patterns

-  **Fire Retardancy**  
Flammability testing determines a fabric's resistance to burning. Passes Cal 117.
-  **Colorfastness to Wet and Dry Crocking**  
The rubbing off of color from fabric onto clothing, hands or other materials and can occur under wet or dry conditions. Passes AATCC 8-1974 Dry Crocking, Class 4 minimum, Wet Crocking, Class 3 minimum.
-  **Colorfastness to Light**  
The degree to which fabric will retain its color when exposed to light. Passes AATCC 16A-1974 or AATCC 16E-1976, Class 4 minimum at 40 hours Note: Class 4 minimum at 60 hours is recommended for direct sunlight exposure.
-  **Physical Properties**  
Brush Pill Test to determine a fabric's pilling, Breaking/Tensile Strength Test determines the ability of a fabric to withstand tension without breaking or tearing. Seam Slippage Test determines the pulling apart of fabrics at the seams. Passes Brush Pill ASTM D3511, 3-4 minimum, Breaking Strength ASTM D3597-D1682-64 (1975) 50 lbs. minimum in warp & weft, Seam Slippage ASTM D3597-D434-75 25 lbs. minimum in warp & weft.
-  **Abrasion**  
The ability of a fabric to withstand damage from wear and rubbing. Passes Heavy Duty Contract ASTM 3597 modified (No.10 cotton duck); 30,000 double rubs Wyzenbeek Method or ASTM 4966 modified (with 21 oz. wt.); 40,000 rubs Martindale Method.
-  **Cal 133**  
These fabrics can be used in combination with other designated SitOnIt Seating and IDEON components to meet the California Technical Bulletin 133 standard for furniture flammability. Cal 133 has been tested and approved for SitOnIt and IDEON products.

cleaning code definitions

- S: Clean only with dry solvent.
- WS: Water based cleaning agents and foam may be used.
- BC: Bleach Cleanable 

SitOnIt • Seating® 

6415 Katella Ave. • Cypress, CA 90630  
tel. 888.274.5933 • [sitonit.net](http://sitonit.net)  
Form No. C1013-10/17-7500 ©2017 Exemplis

Arc|Com  
(800) 223-5466  
[arc-com.com](http://arc-com.com)



**Santa Fe Pebble**  
AC-60270 #1



**Dynasty Beach**  
AC-60519 #20



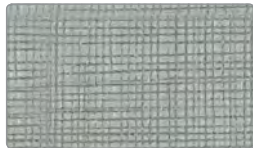
**Santa Fe Sand**  
AC-60272 #3



**Moon Beam 2 Stone**  
AC-60584 #27



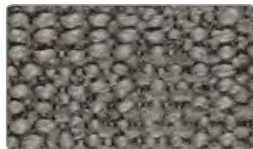
**Palatine 2 Mist**  
AC-61210 #17



**Intaglio 2 Fog**  
AC-61416 #27



**Polished Fog**  
AC-60759 #20



**Santa Fe Smoke**  
AC-60286 #17



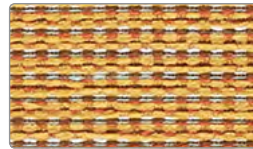
**Isabella Sand**  
AC-60851 #2



**Katano Tangerine**  
AC-61521 #2



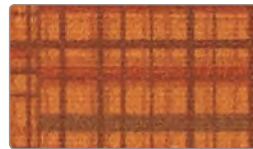
**Gianni Heat Wave**  
AC-62204 #5



**Palatine 2 Sunflower**  
AC-61216 #23



**Dynasty Apricot**  
AC-60502 #3



**Velocity Papaya**  
AC-61983 #4



**Silverado 2 Orange**  
AC-62713 #24



**Silverado 2 Chili Pepper**  
AC-62714 #25



**Polished Burgundy**  
AC-60746 #7



**Velocity Bark**  
AC-61996 #17



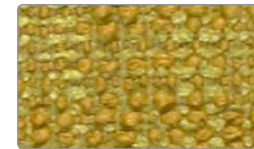
**Moon Beam 2 Godiva**  
AC-60603 #46



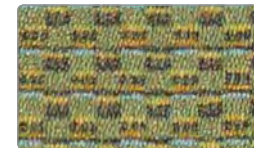
**Intaglio 2 Citron**  
AC-61418 #29



**Moon Beam 2 Citron**  
AC-60595 #38



**Santa Fe Lime**  
AC-60280 #11



**Axis Lime**  
AC-61349 #10



**Polished Avocado**  
AC-60748 #9



**Silverado 2 Kiwi**  
AC-62710 #21



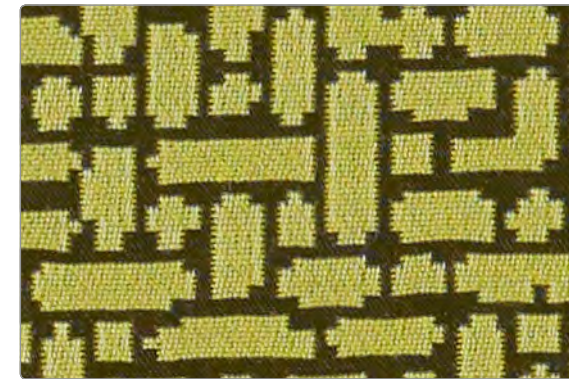
**Palatine 2 Grass**  
AC-61224 #31



**Polished Cypress**  
AC-60750 #11



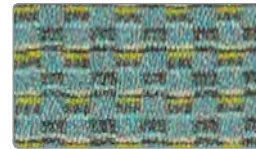
**Sundial Citrine**  
AC-62253 #4



**Great Wall Green Grass**  
AC-62219 #10



**Geostitch Blueberry**  
AC-62196 #7



**Axis Seaglass**  
AC-61340 #1



**Moon Beam 2 Ocean**  
AC-60597 #40



**Dynasty Baltic**  
AC-60515 #16



**Silverado 2 Indigo**  
AC-62718 #29



**Polished Sapphire**  
AC-60756 #17



**Santa Fe Blueberry**  
AC-60283 #14



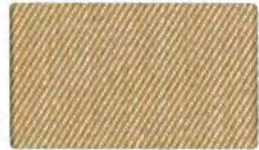
**Moon Beam 2 Coal**  
AC-60601 #44



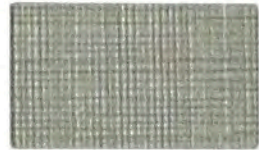
**Palatine 2 Onyx**  
AC-61235 #42



**Shibori Pebble**  
AC-60040 #1



**Vista Flax**  
AC-69821 #2



**Intaglio Moonstone**  
AC-69401 #2



**Moon Beam Butterscotch**  
AC-68637 #18



**Chroma Mist**  
AC-60161 #32



**Galaxy Truffle**  
AC-60185 #16



**Chroma Frost**  
AC-60131 #2



**Intaglio Sand**  
AC-69403 #4



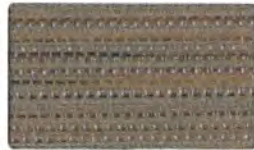
**Vista Mushroom**  
AC-69833 #14



**Plateau Frost**  
AC-69800 #1



**Plateau Grain**  
AC-69801 #2



**Moon Beam Pebble**  
AC-68641 #22



**Yo-Yo Stone**  
AC-69142 #3



**Chroma Smoke**  
AC-60163 #34



**Delta Mushroom**  
AC-69841 #2



**Intaglio Onyx**  
AC-69419 #20



**Illusion Mink**  
AC-68596 #17



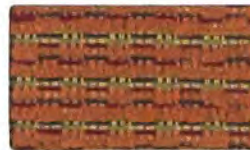
**Roundabout Sunflower**  
AC-60095 #6



**Chroma Orange**  
AC-60139 #10



**Prism Papaya**  
AC-60220 #11



**Palatine Tangerine**  
AC-68453 #4



**Plateau Paprika**  
AC-69804 #5



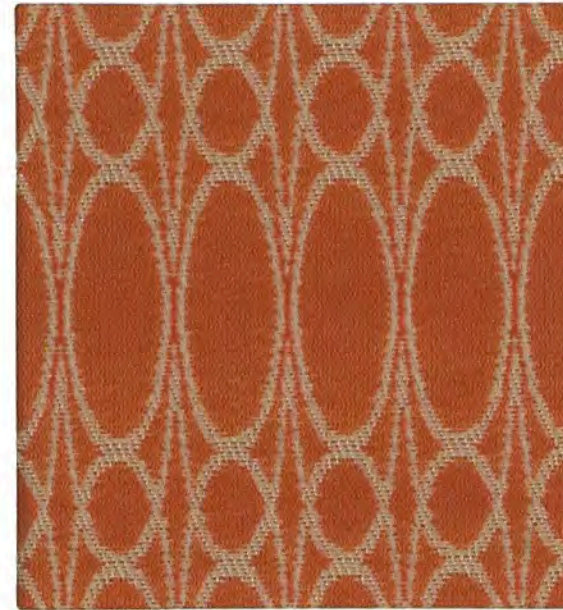
**Yo-Yo Cherry**  
AC-69149 #10



**Chroma Sunflower**  
AC-60137 #8



**Chroma Ginger**  
AC-60138 #9



**Clarion Tangerine**  
AC-60025 #6



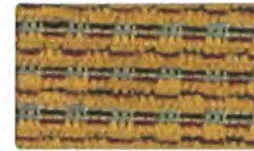
**Chroma Watermelon**  
AC-60140 #11



**Moon Beam Flame**  
AC-68631 #12



**Mesa Grape**  
AC-69881 #12



**Palatine Butterscotch**  
AC-68452 #3



**Illusion Amber**  
AC-68583 #4



**Prism Fire**  
AC-60221 #12



**Silverado Merlot**  
AC-67654 #5



**Legacy Iris**  
AC-69458 #19



**Chroma Citrine**  
AC-60143 #14



**Silverado Lime**  
AC-67662 #13



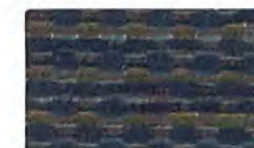
**Vista Lichen**  
AC-69827 #8



**Navigator Baltic**  
AC-69500 #11



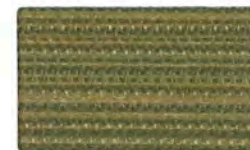
**Prism Cobalt**  
AC-60234 #25



**Palatine Rainstorm**  
AC-68460 #11



**Delta Green Tea**  
AC-69849 #10



**Moon Beam Sweet Pea**  
AC-68630 #11



**Silverado Parsley**  
AC-67661 #12



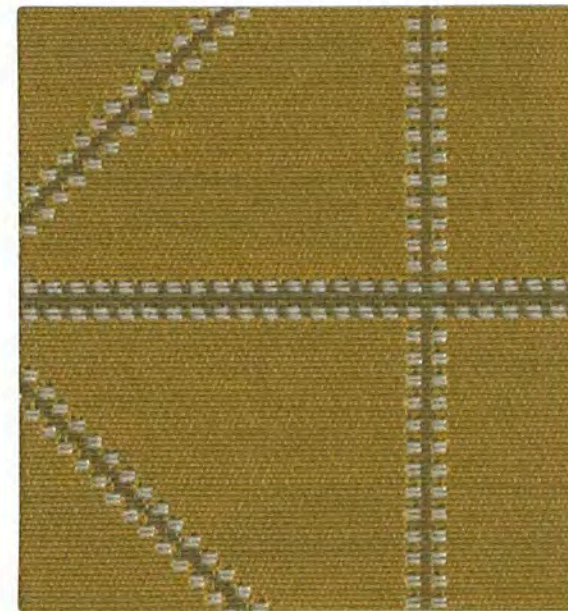
**Chroma Ice Blue**  
AC-60149 #20



**Etch Blueberry**  
AC-68165 #16



**Legacy Midnight**  
AC-69457 #18



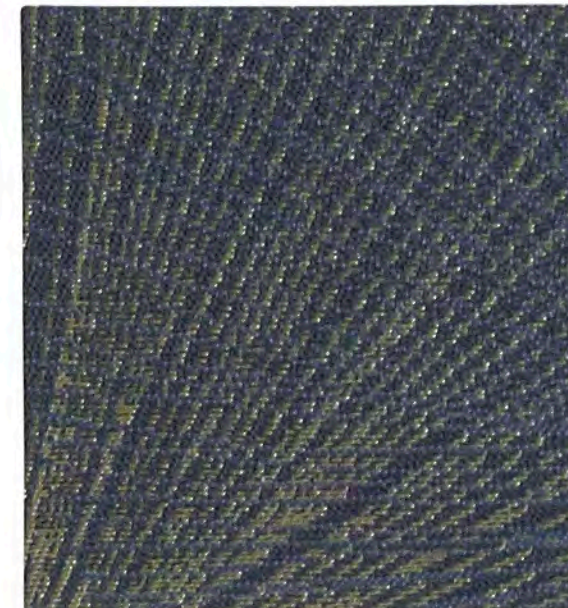
**Intersect Key Lime**  
AC-69568 #9



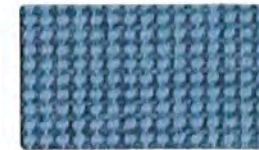
**Chroma Ice Blue**  
AC-60149 #20



**Silverado Marine**  
AC-67655 #6



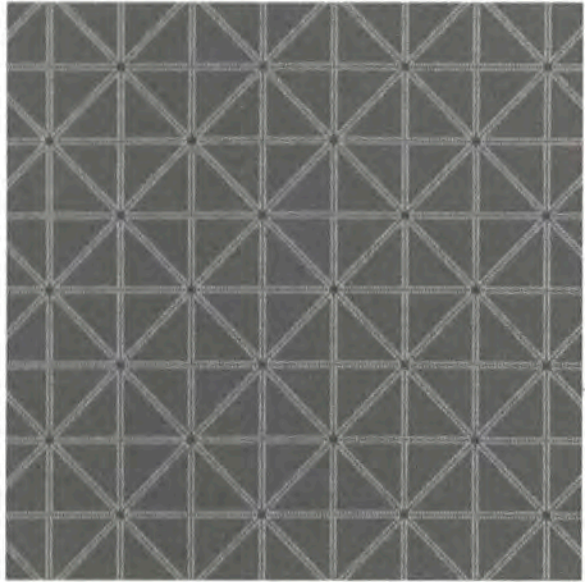
**Nova Sapphire**  
AC-60013 #14



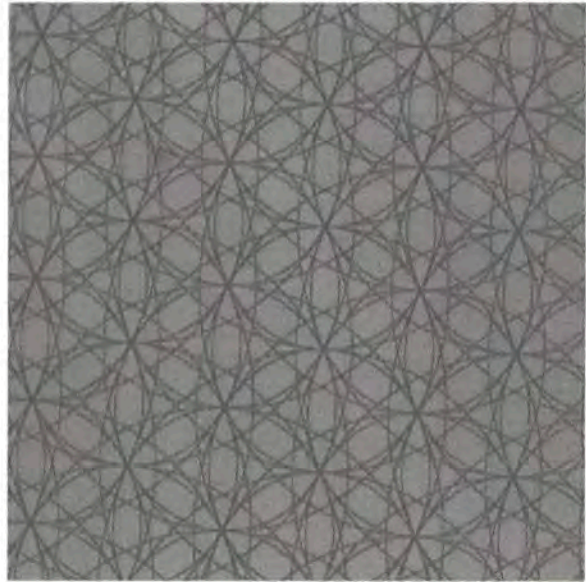
**Prism Sky**  
AC-60233 #24



**Intaglio Baltic**  
AC-69414 #15



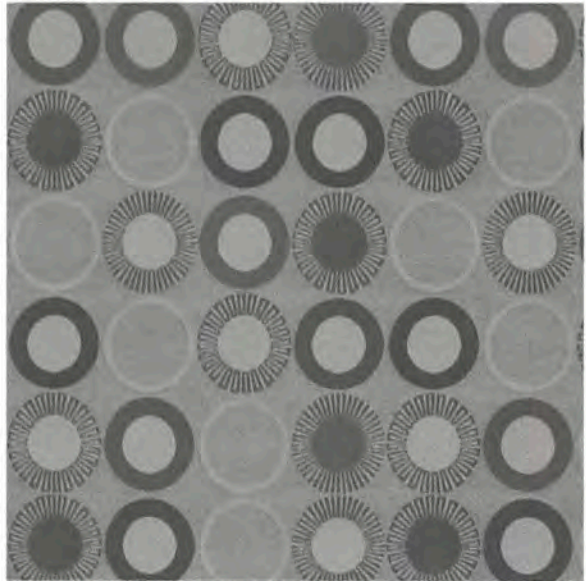
Intersect



Navigator



Roundabout



Yo-Yo

Arc|Com  
Alliance™

SitOnIt • Seating™



## technical information

Pattern	Content	Finish	Approx. Repeat	Abrasion Resistance (Double Rubs)	Cal 133 (SOI Only)	Cleaning Code	IDEON Grade	SOI Grade
Chroma	90% Vinyl, 10% Urethane Face, 100% Polyester Hi-Loft™ Back	AG SILVERGUARD Silver Ion Technology, PERMABLOK™ Advanced Vinyl Protection Stain Resistant Finish	N/A	300,000		WS/BC	H	6
Clarion®	47% Post Consumer Recycled Polyester, 27% Nylon, 26% Polyester, eco-tex	NANOTex Stain Resistant Finish Acrylic Backing	1/2" H x 2" V	135,000	133	WS/BC	H	6
Delta	68% Post Consumer Recycled Polyester, 32% Polyester, eco-tex	CRYPTON® GREEN Stain Resistant Finish	N/A	150,000	133	WS/BC	F	5
Etch®	90% Vinyl, 10% Urethane Face, 100% Polyester Hi-Loft™ Back	PERMABLOK™ Advanced Vinyl Protection Stain Resistant Finish	N/A	500,000		WS/BC	H	6
Galaxy®	50% Post Industrial Recycled Nylon, 50% Nylon, eco-tex	Stain Resistant Finish Acrylic Backing	14 1/2" H x 14 1/2" V	150,000	133	WS/BC	N	6
Illusion	100% Vinyl Face, 100% Polyester Back	RESILIENCE™ Enduring Protection Stain Resistant Finish	N/A	350,000		WS/BC	E	4
Intaglio	100% Polyurethane Face, 100% Polyester Knit Back, eco-tex	WIPEOUT™ Stain Protection, Aegis Microbe Shield, Abrasion Resistant, Mildew Resistant	N/A	500,000	133	WS/BC	J	6
Intersect®	66% Post Consumer Recycled Polyester, 34% Post Industrial Recycled Polyester, eco-tex	NANOTex Stain Resistant Finish Polyester Backing	Half Drop, 5" H x 5" V	90,000	133	WS/BC	J	6
Legacy	100% Polyester	CRYPTON® Stain Resistant Finish	N/A	140,000	133	WS/BC	J	6
Mesa	60% Post Consumer Recycled Polyester, 40% Polyester, eco-tex	CRYPTON® GREEN Stain Resistant Finish	N/A	150,000	133	WS/BC	F	5
Moon Beam	61% Polyester, 27% Cotton, 11% Rayon, 1% Nylon	CRYPTON® Stain Resistant Finish	N/A	150,000	133	WS	J	6
Navigator®	100% Solution Dyed Nylon	NANOTex Stain Resistant Finish Acrylic Backing	5" H x 3" V	300,000	133	WS/BC	J	6
Nova®	62% Polyester, 38% Nylon	INCASE Fabric Protection Acrylic Backing	14 1/2" H x 16 1/2" V	150,000	133	WS/BC	M	7
Palatine	65% Polyester, 35% Rayon	CRYPTON® Stain Resistant Finish	N/A	150,000	133	WS	J	6
Plateau	100% Polyester	CRYPTON® Stain Resistant Finish	N/A	105,000	133	WS/BC	F	5
Prism	100% Polyester	INCASE Fabric Protection Acrylic Backing	N/A	150,000	133	WS/BC	E	4
Roundabout®	100% Post Consumer Recycled Polyester, eco-tex	GREENSHIELD® Stain Resistant Finish	7" H x 11 1/2" V	80,000	133	WS/BC	G	5
Shibori®	62% Polyester, 38% Nylon	INCASE Fabric Protection Acrylic Backing	7 1/2" H x 7 1/2" V	145,000	133	WS/BC	M	7
Silverado	100% Vinyl Face/100% Polyester Hi-Loft™ Back	PERMABLOK™ Advanced Vinyl Protection Stain Resistant Finish	N/A	100,000		WS/BC	G	5
Vista	50% Post Consumer Recycled Polyester, 50% Polyester, eco-tex	CRYPTON® GREEN Stain Resistant Finish	N/A	150,000	133	WS/BC	F	5
Yo-Yo®	54% Cotton, 30% Nylon, 16% Polyester	NANOTex Stain Resistant Finish Acrylic Backing	9" H x 20" V	135,000	133	WS	R	7

See Arc|Com Textile samples for specific technical data.

This card represents only a select sampling of the Arc|Com Fabrics available.

For the complete selection of patterns and colorways and/or samples of our specific fabrics visit our website at [www.arc-com.com](http://www.arc-com.com) or contact Arc|Com Fabrics at 800-223-5466.

SitOnIt • Seating™



888.274.8664

714.995.4855 Fax

[www.sitonit.net](http://www.sitonit.net)

[sales@sitonit.net](mailto:sales@sitonit.net)

[www.IDEONDesign.com](http://www.IDEONDesign.com)

[sales@ideondesign.com](mailto:sales@ideondesign.com)



### Showroom Locations

#### Los Angeles

6415 Katella Avenue  
Cypress, CA 90630

#### Chicago

222 Merchandise Mart Plaza  
Suite 1150  
Chicago, IL 60654

#### New York City

11 East 26th  
New York, NY 10010

Form No. C338-12/12-10K ©2013 Exemplis Corporation

all ACT® Icons apply to the above patterns



**Fire Retardancy**  
Flammability testing determines a fabric's resistance to burning. Passes Cal 117.



**Colorfastness to Wet and Dry Crocking**  
The rubbing off of color from fabric onto clothing, hands or other materials and can occur under wet or dry conditions. Passes AATCC 8-1974 Dry Crocking, Class 4 minimum; Wet Crocking, Class 3 minimum.



**Colorfastness to Light**  
The degree to which fabric will retain its color when exposed to light. Passes AATCC 16A-1974 or AATCC 16B-1976, Class 4 minimum at 40 hours. Note: Class 4 minimum at 60 hours is recommended for direct sunlight exposure.



**Physical Properties**  
Brush Pile Test to determine a fabric's pilling, Breaking/Tensile Strength Test determines the ability of a fabric to withstand tension without breaking or tearing. Seam Slippage Test determines the pulling apart of fabrics at the seams. Passes Brush Pile ASTM D3511, 3-4 minimum; Breaking Strength ASTM D3597-D1682-64 (1975) 50 lbs. minimum in warp & weft; Seam Slippage ASTM D3597-D434-75 25 lbs. minimum in warp & weft.



**Abrasion**  
The ability of a fabric to withstand damage from wear and rubbing. Passes Heavy Duty Contract ASTM 3597 modified (No. 10 cotton duck) 50,000 double rubs Wyzenbeek Method or ASTM 4966 modified (with 21 oz. wt.) 40,000 rubs Martindale Method.



**Cal 133**  
These fabrics can be used in combination with other designated SitOnIt components to meet the California Technical Bulletin 133 standard for furniture flammability. Cal 133 has been tested and approved for SitOnIt products only.

### cleaning code definitions

- S:** Clean only with dry solvent.
- WS:** Water based cleaning agents and foam may be used.
- BC:** Bleach Cleanable. **BLEACH** Resistant.

Arc|Com

(800) 223-5466  
[www.arc-com.com](http://www.arc-com.com)