

TECHNICAL INFORMATION

54" Pattern	Approx. Repeat	Fiber Content & Finish	Abrasion (Wyzenbeek)	Lightfastness (AATCC Method 16)	Cleaning Code
ABERDEEN©	V-27" H-27"	100% Vinyl Face, 100% Hi-Loft <sup>2™</sup> Polyester Back PFOS, PFOA Free Stain Resistant	300,000 D.R.	200 hours	WS/BC
APOLLO	V-none H-none	100% Polyester CRYPTON®	150,000 D.R.	40 hours	WS/BC
AROUND©	V-6 ½" H-7 ¼"	79% Polyester, 21% Nylon CRYPTON®	100,000 D.R.	40 hours	WS/BC
ATMOSPHERE	V-none H-none	100% Polyester Stain Resistant, Acrylic Backing	150,000 D.R.	40 hours	WS
DELPHI©	V-none H-none	78% Polyester, 21% PCR Polyester, 1% Nylon Stain Resistant, Acrylic Backing	140,000 D.R.	60 hours	WS/BC
EMERSON	V-none H-none	100% Polyester Stain Resistant, Acrylic Backing	150,000 D.R.	40 hours	WS
FRAGMENT©	V-10 ¼" H-10"	100% Polyurethane Face, 100% Polyester Back WriteOut® Ink Resistant	300,000 D.R.	200 hours	WS/BC
INSIGHT	V-none H-none	100% Phthalate Free Vinyl Face, 100% Polyester Back Stain Resistant	300,000 D.R.	200 hours	WS/BC
INTERSTATE©	V-4 ¼" H-4 ½"	67% PCR Polyester, 33% Solution-Dyed Nylon Stain Resistant, Acrylic Backing	150,000 D.R.	40 hours	WS/BC
IONA©	V-4" H-7 ½"	100% Polyester CRYPTON®	110,000 D.R.	40 hours	WS/BC
LORE	V-none H-none	100% Polyurethane Face, 100% Polyester Back WriteOut® Ink Resistant	300,000 D.R.	200 hours	WS/BC
PALATINE 2	V-none H-none	65% Polyester, 35% Rayon CRYPTON®	150,000 D.R.	40 hours	WS
ROGUE	V-none H-none	48% Polyester, 33% PIR Polyester, 19% PCR Polyester CRYPTON® green	150,000 D.R.	40 hours	WS/BC
SHERLOCK 2	V-none H-none	73% Polyester, 27% Viscose alta™ performance technology, Acrylic Backing	150,000 D.R.	40 hours	WS
SOLITUDE	V-none H-none	100% Polyurethane Face, 100% Polyester Back WriteOut® Ink Resistant	300,000 D.R.	200 hours	WS/BC
TRAVERSE©	V-9 ¾" H-5"	56% PCR Polyester, 23% Polyester, 21% Solution-Dyed Nylon CRYPTON®	150,000 D.R.	40 hours	WS/BC
WATSON	V-none H-none Shown Railroaded	68% Olefin, 32% Polyester Stain Resistant, Acrylic Backing	110,000 D.R.	40 hours	WS/BC

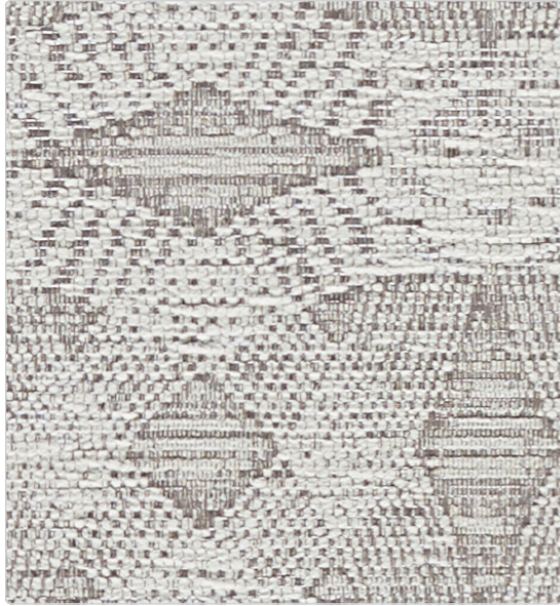
Cleaning Codes:  
WS - Water based cleaning agents or foam may be used.  
BC - May be cleaned with bleach following the proper ratio of water and bleach.  
Cleaning by a professional service is recommended.

This card represents only a select sampling of the Arc|Com fabrics available. For the complete selection of patterns and colorways and/or samples of our specific fabrics visit our website at [arc-com.com](http://arc-com.com) or contact Arc|Com.

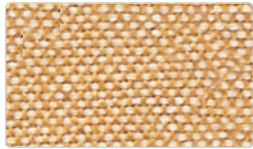
See Arc|Com Textile samples for specific technical data.  
Multiple factors affect fabric durability and appearance retention, including end-user application and proper maintenance.  
Wyzenbeek results above 100,000 double rubs have not been shown to be an indicator of increased lifespan.



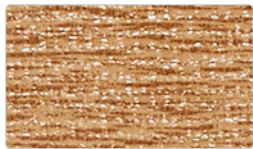




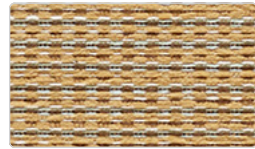
Iona  
AC-63740 Cloud #1



Emerson  
AC-63383 Wheat #14



Solitude  
AC-62499 Mocha #20



Palatine 2  
AC-61212 Wheat #19



Insight  
AC-63525 Cinnamon #6



Aberdeen  
AC-63653 Espresso #14



Atmosphere  
AC-63892 Beach #13



Palatine 2  
AC-61211 Beach #18



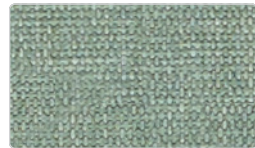
Solitude  
AC-62482 Putty #3



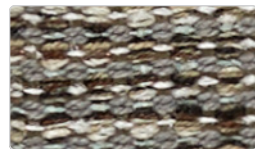
Atmosphere  
AC-63891 Cocoa #12



Around  
AC-63833 Grain #4



Insight  
AC-63544 Herb #25



Delphi  
AC-61320 Pebble #1



Atmosphere  
AC-63895 Ash #16



Insight  
AC-63541 Fir #22



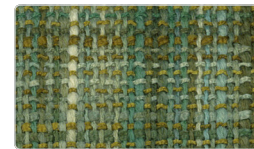
Rogue  
AC-62541 Fog #2



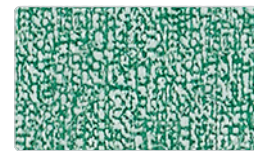
Insight  
AC-63553 Pewter #34



Watson  
AC-63924 Lemon #5



Apollo  
AC-63359 Grass #10



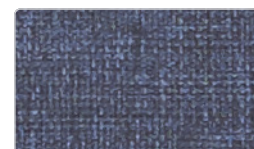
Lore  
AC-62477 Grass #8



Traverse  
AC-63440 Caribbean #1



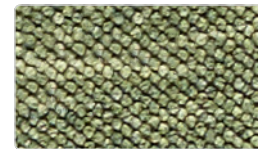
Apollo  
AC-63357 Ocean #8



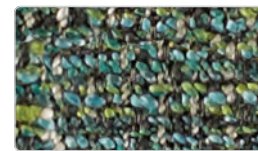
Insight  
AC-63533 Denim #14



Insight  
AC-63522 Citrine #3



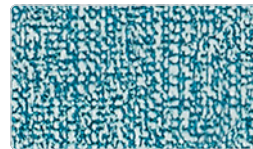
Atmosphere  
AC-63881 Grass #2



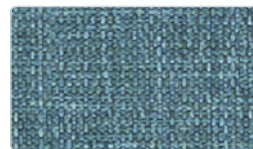
Sherlock 2  
AC-63133 Bluegrass #20



Interstate  
AC-63678 Herb #9



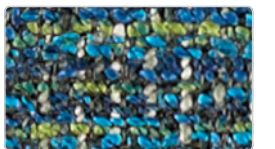
Lore  
AC-62478 Teal #9



Insight  
AC-63543 Caribbean #24



Palatine 2  
AC-61227 Teal #34



Sherlock 2  
AC-63132 Ocean #19



Fragment  
AC-63191 Indigo #12